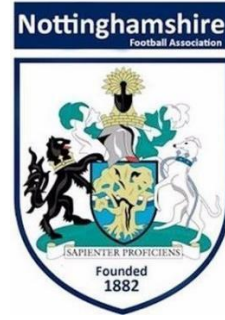




**Respect**



# INFORMATION RESOURCE 2025/2026

*Setting the Standards for a great game.  
Use your position to set a positive example for the people your  
responsible for and lead a better game for everyone.*



**CHARTER STANDARD  
COMMUNITY CLUB**



**CONTENTS:**

**Page 3:** Introduction

**CALVERTON MINERS WELFARE CHARITY**

Club Facilities

Charity Number

**CALVERTON MINERS WELFARE FC/ COLTS**

**Page 4:** Mission statement

**Page 5/6:** Child Safeguarding Protection Policy

**Page 7:** Committee Members

**Page 8:** Committee contacts

**Page 9:** Affiliation Numbers/ Summary of Accounts

**Page 10:** Frequently asked questions

**Page 11:** Club Shop Web site (Kit & Equipment)

**Page 12:** Club/Team Web site

**Page 13/ 14/ 15:** Club background & History

**CLUB OPPORTUNITIES**

**Page 16/17:** FOOTBALL LEADERSHIP DIVERSITY CODE

**Page 18:** Children Player Opportunities/Teams (5-7 Yrs) Football School

**Page 19:** Children/ Youth Player Opportunities/Teams (8ys +) Girls & Boys

**Page 20:** Disabled Player Opportunities/Teams

**Page 21:** Senior Player Opportunities/Teams

**Page 21:** Veteran Player Opportunities/Teams

**Page 22:** Elite Players.

**Page 23/ 24/ 25:** Parents / Volunteer Opportunities

**Page 26:** The FA Coaching Pathway

**Page 27:** The FA Referee Pathway

**Page 27:** Other Opportunities

**Page 28:** Sponsorship

**Page 29:** Seasons Timetable

**FA RESPECT**

**Page 30:** Introduction

**Page 31/ 32/ 33/ 34**

Codes of Conduct: Youth Player/Adult Player/ Manager & Coach /Parents

**Page 35/36/37/38/39:**

NOTTS FA, Welfare Help & League contacts

**PAGE 40: SPACE FOR NOTES**



## INTRODUCTION:

Welcome to Calverton Miners Welfare FC. 2025 presents a new start for our club, now four years in the planning and a million pound investment in facilities with new Muga, full size 3G pitch and floodlights. These are exciting times for everyone in the club. Our investment is aimed to bring our community closer to the club and ensure its long-term future through inclusivity. The origins of our club are represented in our club badge. The growth of the community was the opening of the new Coal mine in the 1950s, bringing an influx of families from the northeast to meet the demand for new jobs at the Colliery and a new start. As the community grew so did the need for social activities including football & cricket, our sporting history is discussed in more detail on pages 13 to 15. We value our past but have a strong commitment to the future.

If you are a new manager or Coach, Parent or Player the information provided here will be invaluable.

We want you to know you are not on your own, we are here to help.



## CALVERTON MINERS WELFARE CHARITY

**CHARITY NUMBER : 522265**

### CALVERTON MINERS WELFARE

**ADDRESS : Hollinwood Lane Calverton, Notts, NG14 6NR**

**CONTACT :**

**TELEPHONE : 0115 9654390 / 07918 871235**

**Email : calverton.centre-manager@ ciswo.org.uk**

The Buildings, changing rooms & Pitches all belong to the Miners Welfare Charity. The football club is one of a number of separate organisations that use the buildings & surrounding sports facilities for which we pay fees designed to cover the running & maintenance costs.

The relationship between the Welfare & Football club allows us to receive special rates for pitch & facilities hire. The Welfare also hires out its facilities to a number of outside groups & other Clubs, its members & individuals for Parties, Weddings, meeting etc. Please respect them.

All persons using the facilities need to be signed members of the Welfare or a guest of a member. Signing on fees payable to the football club include membership of the Welfare. The Welfare provides room hire for meetings, parties, weddings and catering facilities. Contact the Miners Welfare for more information.

**FUNCTION ROOM HIRE 0115 9654390**

**CATERING : as above**

**PITCH & ASTRO BOOKINGS : Joanne Swinscoe**

**TELEPHONE : 07816 831048**

**Email : joanne374@btinternet.com**





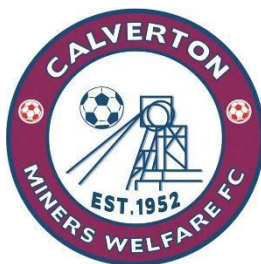
## MISSION STATEMENT:

- To build & sustain a successful community football club
- Inclusive football for all regardless of ability , gender or age
- To provide an environment where young players can express themselves and enjoy their football development and education.
- Provide a model pathway of **FAIR PLAY TIME** for learning and development of youth players such that the opportunity to play at senior level exists at Calverton.
- To maximise the potential of talented individuals!
- Develop players as responsible people with an awareness of their responsibilities to each other with mutual respect for others.
- Develop and teach the young players to understand the benefits to be gained in a healthy lifestyle, diet, drug awareness, education and codes of conduct.
- To develop relationships with parents, schools and other professional organisations that is concerned with the needs of young players individually and collectively.



## We will achieve this through the following aims:

- We will encourage and promote the development of football within the community and the surrounding area in a safe and secure environment
- We will strive to provide equal opportunity for players of both sexes and all abilities & disability players to participate in football at all age levels.
- **The club will promote fair play time in ALL teams up to 11a-side football.**
- The club will seek to compete at the highest possible level.
- We will endeavour to facilitate the provision of the best playing amenities and equipment available to us in line with the growth of sport within the community
- We will aim to be amongst the best football clubs within the county and continue to achieve the highest possible standards in grass root football.



## CALVERTON MINERS WELFARE FC Safeguarding Children Policy

1. Calverton Miners welfare Football Club acknowledges its responsibility to safeguard the welfare of every child and young person who has been entrusted to its care and is committed to working to provide a safe environment for all members. A child or young person is anyone under the age of 18 engaged in any club football activity. We subscribe to The Football Association's (The FA) Safeguarding Children – Policy and Procedures and endorse and adopt the Policy Statement contained in that document.

2. The key principles of The FA Safeguarding Children Policy are that:

- i) the child's welfare is, and must always be, the paramount consideration
- ii) all children and young people have a right to be protected from abuse regardless of their age, gender, disability, race, sexual orientation, faith or belief.
- iii) all suspicions and allegations of abuse will be taken seriously and responded to swiftly and appropriately
- iv) working in partnership with other organisations, children and young people and their parents/carers is essential. We acknowledge that every child or young person who plays or participates in football should be able to take part in an enjoyable and safe environment and be protected from poor practice and abuse. Calverton Miners Welfare Football Club recognises that this is the responsibility of every adult involved in our club.

3. Calverton Miners welfare Football Club has a role to play in safeguarding the welfare of all children and young people by protecting them from physical, sexual or emotional harm and from neglect or bullying. It is noted and accepted that The Football Association's Safeguarding Children Regulations (see The FA Handbook) applies to everyone in football whether in a paid or voluntary capacity. This means whether you are a volunteer, match official, helper on club tours, football coach, club official or medical staff.

4. We endorse and adopt The FA's Responsible Recruitment guidelines for recruiting volunteers and we will:

- i) specify what the role is and what tasks it involves
- ii) request identification documents
- iii) as a minimum meet and chat with the applicant(s) and where possible interview people before appointing them
- iv) ask for and follow up with 2 references before appointing someone
- v) where eligible require an FA accepted Enhanced Criminal Record Check (CRC) with Barring List Check in line with current FA policy and regulations.

All current Calverton Miners Welfare Football Club members working in eligible roles, with children and young people - such as managers and coaches are required to hold an in-date FA accepted Enhanced CRC with Barring List check as part of responsible recruitment practice.<sup>1</sup>

If there are concerns regarding the appropriateness of an individual who is already involved or who has approached us to become part of Calverton Miners Football Club guidance will be sought from The Football Association. It is noted and accepted that The FA will consider the relevance and significance of the information obtained via the CRC Process and that all suitability decisions will be made in accordance with legislation and in the best interests of children and young people.

It is accepted that The FA aims to prevent people with a history of relevant and significant offending from having contact with children or young people and the opportunity to influence policies or practice with children or young people.

This is to prevent direct sexual or physical harm to children and to minimise the risk of 'grooming' within football.

**5. Calverton Mines Welfare Football Club** supports The FA's Whistle Blowing Policy.

Any adult or young person with concerns about a adult in a position of trust with football can 'whistle blow' by contacting The FA Safeguarding Team on 0800 169 1863, by writing to The FA Case Manager at The Football Association, Wembley Stadium, PO Box 1966, London SW1P 9EQ, by emailing [Safeguarding@TheFA.com](mailto:Safeguarding@TheFA.com) or alternatively by going direct to the Police, Children's Social Care or the NSPCC. Football Club encourages everyone to know about The FA's Whistle Blowing Policy and to utilise it if necessary.

**6. Calverton Mines Welfare Football Club** has an appointed a Club Welfare Officer in line with The FA's role profile and required completion of the Safeguarding Children and Welfare Officers Workshop. The post holder will be involved with Welfare Officer training provided by The FA and/or County FA. The Club Welfare Officer is the first point of contact for all club members regarding concerns about the welfare of any child or young person. The Club Welfare Officer will liaise directly with the County FA (CFA) Welfare Officer and will be familiar with the procedures for referring any concerns. They will also play a proactive role in increasing awareness of **Respect**, poor practice and abuse amongst club members.

**7.** We acknowledge and endorse The FA's identification of bullying as a category of abuse. Bullying of any kind is not acceptable at our club. If bullying does occur, all players or parents/carer's should be able to tell and know that incidents will be dealt with promptly. Incidents need to be reported to the Club Welfare Officer in cases of serious bullying the CFA Welfare Officer may be contacted.

**8. Respect codes of conduct** for Players, Parents/ Spectators, Officials and Coaches have been implemented by Calverton Miners Welfare Football Club. **See Pages 28-32**

In order to validate these **Respect** codes of conduct the club has clear actions it will take regarding repeated or serious misconduct at club level and acknowledges the possibility of potential sanctions which may be implemented by the County FA in more serious circumstances.

**9.** Reporting your concerns about the welfare of a child or young person.

**Safeguarding is everyone's responsibility if you are worried about a child it is important that you report your concerns – no action is not an option.**

- i. If you are worried about a child then you need to report your concerns to the Club Welfare Officer.
- ii. If the issue is one of poor practice the Club Welfare Officer will either deal with the matter themselves or seek advice from the CFA Welfare Officer
- iii. If the concern is more serious – possible child abuse, where possible, contact the CFA Welfare Officer first, then immediately contact the Police or Children's Social Care.
- iv. If the child needs immediate medical treatment take them to a hospital or call an ambulance and tell them this is a child protection concern. Let your Club Welfare Officer know what action you have taken, they in turn will inform the CFA Welfare Officer.
- v. If at any time you are not able to contact your Club Welfare Officer or the matter is clearly serious then you can either:

contact your CFA Welfare Officer directly

contact The FA Safeguarding Team on 0800 169 1863 or [Safeguarding@TheFA.com](mailto:Safeguarding@TheFA.com)

contact the Police or Children's Social Care

call the NSPCC 24 hour Helpline for advice on 0808 800 5000 or text 88858 or email [help@nspcc.org.uk](mailto:help@nspcc.org.uk)

**NB – The FA's Safeguarding Children Policy** and Procedures are available via – [www.TheFA.com/football-rules-governance/safeguarding](http://www.TheFA.com/football-rules-governance/safeguarding) – click on 'Raising Awareness – Best Practice Downloads', the Policy and Procedures document is within the resources area.

The policy outlines in detail what to do if you are concerned about the welfare of a child and includes flow diagrams which describe this process. How to make a referral is also covered in the Safeguarding Children workshop. Participants are given the opportunity to discuss how this feels and how best they can prepare themselves to deal with such a situation. For more information on this workshop contact your County Welfare Office

## ANTI-BULLYING POLICY: What is Bullying ?

Bullying is the use of aggression with the intention of hurting another person. Bullying results in pain and distress to the victim.

### **Bullying can be:**

- Emotional being unfriendly, excluding (emotionally and physically) sending hurtful text messages, tormenting, (e.g. hiding football boots/shin guards, threatening gestures)
- Physical pushing, kicking, hitting, punching or any use of violence
- Sexual unwanted physical contact or sexually abusive comments
- Discrimination comments, jokes about disabled people, sexist comments,
- Verbal name-calling, sarcasm, spreading rumours, teasing

**Cyber Bullying** This is when a person uses technology i.e. mobile phones or the internet (social networking sites, chat rooms, instant messenger, tweets), to deliberately upset someone. Bullies often feel anonymous and 'distanced' from the incident when it takes place online and 'bystanders' can easily become bullies themselves by forwarding the information on. There is a growing trend for bullying to occur online or via texts – bullies no longer rely on being physically near to the young person.

**Trolling** : This is the name given to posting deliberately offensive comments on people's social media pages aimed at causing upset and distress. This type of behaviour could result in legal action.

**OUR COMMITMENT** This club commits to ensure our website websites and/ or social networking pages are being used appropriately and any online bullying will be dealt with swiftly and appropriately in line with procedures detailed in this policy.

**WHY IS IT IMPORTANT O RESPOND TO BULLYING:** Bullying hurts. No one deserves to be a victim of bullying. Everybody has the right to be treated with respect. Individuals who are bullying need to learn different ways of behaving. This club has a responsibility to respond promptly and effectively to issues of bullying.

### **Objectives of this Policy**

- have an understanding of what bullying is.
- All Club members should what the club policy is on bullying, and follow it when bullying is reported.
- All players and parents should know what the club policy is on bullying, and what they should do if bullying arises.
- As a club we take bullying seriously. Players and parents should be assured that they would be supported when bullying is reported.
- Bullying will not be tolerated.

### **Signs and Indicators :**

A child may indicate by signs or behaviour that he or she is being bullied. Adults should be aware of these possible signs and that they should investigate if a child.

- says he or she is being bullied
- is unwilling to go to club sessions
- becomes withdrawn anxious, or lacking in confidence
- feels ill before training session.
- comes home with clothes torn or training equipment damaged
- has possessions go "missing"
- asks for money or starts stealing money (to pay the bully)
- has unexplained cuts or bruises
- is frightened to say what's wrong
- gives improbable excuses for any of the above.

In more extreme cases:

- starts stammering
- cries themselves to sleep at night or has nightmares
- becomes aggressive, disruptive or unreasonable
- is bullying other children or siblings
- stops eating
- attempts or threatens suicide or runs away.

**These signs and behaviour may indicate other problems, but bullying should be considered a possibility and should be Investigated.**

This policy is based on guidance provided to schools by KIDSCAPE. KIDSCAPE is a voluntary organisation committed to help prevent child bullying. KIDSCAPE can be contacted on 0207 730 3300 or you can access their website via [www.kidscape.org.uk](http://www.kidscape.org.uk)  
 You may also wish to access any of the following websites designed to give advice and guidance to parents and children who are faced with dealing with bullying:

### Guidance for parents/carers

[www.anti-bullyingalliance.org.uk/](http://www.anti-bullyingalliance.org.uk/)  
[www.stonewall.org.uk](http://www.stonewall.org.uk)  
[www.bullying.co.uk](http://www.bullying.co.uk)

### Guidance for young people

[www.youngstonewall.org.uk/](http://www.youngstonewall.org.uk/)  
[www.childline.org.uk](http://www.childline.org.uk)

We would like to thank the ASA who have shared their Anti Bullying Policy for Clubs and to Stonewall's guidance from which this recommended FA Club Anti Bullying Policy has been developed.

### Further advice on Safeguarding Children matters can be obtained from

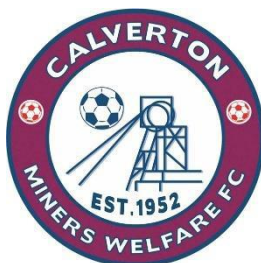
- i) CMWFC David Lee : TEL: 07904 458723 or Joanne Swinscoe: TEL: 07816 831048
- ii) County Football Association's Welfare Officer : Jane Hornby  
[safeguarding@nottinghamshirefa.com](mailto:safeguarding@nottinghamshirefa.com) or [info@nottinghamshirefa.com](mailto:info@nottinghamshirefa.com)
- iii) [www.TheFA.com/football-rules-governance/ safeguarding](http://www.TheFA.com/football-rules-governance/safeguarding) Emailing –  
[Safeguarding@TheFA.com](mailto:Safeguarding@TheFA.com)
- iv) The FA Safeguarding Children general enquiry line 0845 210 8080
- v) CHILDLINE : TEL 0800 1111

### Complaints :

If you feel the club has not dealt with your concerns in satisfactory manner or you wish to report a club official please contact one of the following:

- i) County Football Association's Welfare Officer : Jane Hornby  
[safeguarding@nottinghamshirefa.com](mailto:safeguarding@nottinghamshirefa.com) or [info@nottinghamshirefa.com](mailto:info@nottinghamshirefa.com)
- ii) [www.TheFA.com/football-rules-governance/ safeguarding](http://www.TheFA.com/football-rules-governance/safeguarding) Emailing –  
[Safeguarding@TheFA.com](mailto:Safeguarding@TheFA.com)
- iii) The FA Safeguarding Children general enquiry line 0845 210 8080
- iv) CHILDLINE : TEL 0800 1111





## CALVERTON MINERS WELFARE FC

### Your Committee Team



**Dean Wilson** 07775 790544   
 **Viv Corcoran** 07894 271952   
 **Tina Evans** 07909 783823   
 **Jo Swinscoe** 07816 831048   
 **David Lee** 07904 458723   
 **Mark Corcoran** 07852 198303   
 **Steve Smith** 07939 065521   
 **Paul Mapplebeck** 07963 939489   
 **Bill Bennet** 07473 807681   
 **Lucy Renshaw** 07845 164948   
 **YOU ?** call us today

We are looking to strengthen to our team with like minded people who want to be part of the future of our club , enhancing mental and physical well being in the community through football, sport & social activities

#### COMMITTEE MEMBERS

Dean Wilson,  
Viv Corcoran ,  
Tina Evans  
David Lee,  
Joanne Swinscoe,  
Paul Mapplebeck,  
Mark Corcoran,  
Steve Smith,  
Bill Bennett,  
Lucy Renshaw,  
Senior Team representative

#### CLUB SECRETARY



**Viv Corcoran**

Deals with all club, FA Disciplinary, General club correspondence /Meetings

#### CHAIRPERSON



**Dean Wilson**

To oversee Day to day running and Chair of Meetings

#### CHILD SAFEGUARDING & WELFARE OFFICERS



**Joanne**



**David**

Admin checks for DBS, Safe Guarding, Coaching & 1<sup>st</sup> Aid

#### Treasurer & Finance



**Tina Evans**

Fees & Subs collection. Club Kit & Equipment Trophies/Sponsors

#### Football School & Wildcats



**Bill Bennett/ David Lee**

Introduction to Football Ages 5 to 11 Years

#### Inclusive Football



**David Lee**

Pan Disability Football: Ages 8 to 15 years 16 years to Adults

#### Female Football Development



**VACANCY**

Responsible for development of female section

#### Juniors, Youth, & Mens Football Development



Responsible for setting standards of development of Coaching & Teams from juniors through to Adults & Veterans (male /female)

#### SPONSORSHIP



**Tina Evans**

Costing for Team/ Kit/ Club Sponsorship

#### TRAINING & PITCH BOOKINGS



**Jo Swinscoe**

All confirmation Bookings for games & training

#### MARKETING ,SOCIAL MEDIA & WEBSITE



**Lucy Renshaw**

Promoting, Marketing the 'Miners Welfare', football & Social activities through social media



**VACANCY**

#### FUNDRAISING



Main Administrators

**VACANCY**

Fund raising ideas & events

#### FUNCTION ROOM HIRE-CATERING Parties/Meetings/Events

Call : 0115 9654390  
email: calverton.centre-manager@ ciswo.org

**REACH OUT TO YOUR MAIN CLUB CONTACTS**

**P8**

|   |   |                     |   |
|---|---|---------------------|---|
| <p><b>CHAIRMAN/CWO</b></p> <p>David Lee</p>   |    |                     | <p><a href="mailto:leehomelee@btinternet.com">leehomelee@btinternet.com</a></p> |
| <p><b>SECRETARY</b><br/><b>General matters</b></p> <p>Viv Corcoran</p>  |    | <p>07894 271952</p> | <p><a href="mailto:vivcorky@gmail.com">vivcorky@gmail.com</a></p>               |
| <p><b>SECRETARY</b><br/><b>Whole Game System</b></p> <p>Lucy Renshaw</p>  |    | <p>07845 164948</p> | <p><a href="mailto:lucyrenshaw@rexel.co.uk">lucyrenshaw@rexel.co.uk</a></p>     |
| <p><b>CHILD SAFEGUARDING &amp; WELFARE</b></p> <p>Joanne Swinscoe</p>   |   | <p>07816 831048</p> | <p><a href="mailto:joanne374@btinternet.com">joanne374@btinternet.com</a></p>   |
| <p>Dean Wilson</p>  |  | <p>07775 790544</p> | <p><a href="mailto:deanwilson_uk@yahoo.com">deanwilson_uk@yahoo.com</a></p>     |
| <p>David Lee</p>  |  | <p>07904 458723</p> | <p><a href="mailto:leehomelee@btinternet.com">leehomelee@btinternet.com</a></p> |
| <p><b>TREASURER</b></p> <p>Tina Evans</p>   |  | <p>07909 783823</p> | <p><a href="mailto:evans.tina@mail.com">evans.tina@mail.com</a></p>             |
| <p><b>FOOTBALL SCHOOL &amp; WILDCATS</b><br/>5-11 Years,<br/><b>+ Private Coaching</b><br/>Bill Bennett</p>                             |  | <p>07473 807681</p> | <p><a href="mailto:billb.gk1@icloud.com">billb.gk1@icloud.com</a></p>           |
| <p><b>INCLUSIVE PAN<br/>DISABILITY FOOTBALL</b><br/><b>8 to 15 Years (Juniors)</b><br/><b>16 years + (Seniors)</b></p> <p>David Lee</p> |  | <p>07904 458723</p> | <p><a href="mailto:leehomelee@btinternet.com">leehomelee@btinternet.com</a></p> |

## REACH OUT TO YOUR MAIN CLUB CONTACTS

P8

|   |   |              |  |
|---|---|--------------|--|
| <b>CALVERTON MINERS WELFARE</b>                             | Room booking,<br>Parties, Catering &<br>Events                                    | 0115 9654390 | calverton.centre-manager@<br>ciswo.org |
| <b>PITCH &amp; TRAINING BOOKINGS</b><br><br>Joanne Swinscoe |  | 07816 831048 | joanne374@btinternet.com               |

### OTHER COMMITTEE MEMBERS & ADVISORS



Paul Mapplebeck



Steve Smith



Mark Corcoran



**CHARITY NUMBER** : 522265

**NOTTS FA CLUB AFFILIATION NUMBERS 2021-22**

**CLUB ID** :

**CALVERTON MINERS WELFARE FC (Seniors) :**

**CALVERTON MINERS WELFARE YOUTH FC :**

**CALVERTON MINERS WELFARE LADIES FC :**

**CALVERTON MINERS WELFARE VETERANS FC:**

| <b>Summary of Accounts 2024-25</b>  |  |
|---|--|
| <b>Income</b>   |  |
| Signing on fees, subs, sponsors, donations, tournament, other fund raising  |  |
|   |  |
| <b>OUTGOING</b>   |  |
| League Fees, Player registrations, FA Affiliations, Pitch fees, Training fees, Referee fees, Club Fines, Insurance, Cup fees, end of season trophies, medals, Chips, + Other. |  |
|   |  |
| <b>Balance / Loss</b>   |  |
|   |  |

## FREQUENTLY ASKED QUESTIONS

**P10**

|  |   |
|--|---|
| SIGNING ON FEES (ALL PLAYERS) 2025-2026 Season   | It is £35 per Child , which includes £5 towards Family membership of the Miners Welfare.  |
| SUBS (9 Months) : How Much are Subs per Child  | Subs are £22 per Month (9 x equal Payments) TOTAL:£198 +£35   |
| I have 2 Children do I pay two sets of Signing on fees.  | Yes, both children must be signed on at £35 each. However the Welfare will refund £5 as you only need a single family Membership.   |
| My child plays for Calverton on Saturday & Sunday , do I pay signing on fees twice.  | No in this case you only pay the Signing on fee once.   |
| My child plays for Calverton on Saturday & Sunday , do I pay monthly Subs twice.   | Yes, Monthly subs apply to each team at £22 each  |
| My child plays for another Club one day & Calverton on the other day , do I still play pay the full Signing Fee & Subs .         | Yes.  |
| Why have I got to pay Subs when we had no Games for a few weeks.   | Any games postponed will be played at a future date towards the end of the season. We still have the same Pitch hire , Referee & running costs, they just happen to be at the end of the season.  |
| My Child didn't play lasts weekend because they were ill or we had other arrangements, do I still pay full subs                  | Yes   |
| My Child doesn't always play a full game, do I still pay full Subs.  | Yes , It's a team game with a squad , your manager should be trying to provide fair game time, but that doesn't mean working to a timed stop watch  |
| My Child has a long term Injury or Illness which prevents them playing, do I still pay subs.                                     | That is up to the discretion of the manager, this can be referred to the committee if required.   |
| We have family financial issues ,are there any special circumstances to help us.   | Yes, Please contact your team manager or a committee member to discuss how we can help.   |
| Where does the money from Fees & Subs go   | Calverton offers one of the lowest combined Fees & Subs in the County (£233), with some of the best facilities. The fees go towards, League Fees, Player registrations, Insurance, Kit, Equipment, Trophies, League Presentations, Referees, Pitch & Training Hire and general running costs. Our accounts are audited  |
| Who do I contact if I have concerns regarding any issue around the Team Manager, Coaching or Club                                | We suggest you contact the Club Chairman, Secretary or Child Protection/Welfare officer or Committee member. You can also contact the Nottinghamshire FA directly.  |
| Why can't we have a new kit every season   | We simply can't afford to purchase twenty Team Kits every season. The kit is high quality and is expected to last a minimum of 2 Seasons. It is not the cheapest , but it is proven quality & durability.   |
| I don't like the Club Colours and want my team to wear another Colour/Style Kit  | These are our club colours, recognised by other teams and registered with the FA for all competitions. We expect our teams to turn out in standard Club Colours.  |
| What about Away Kit Colours or where team have a clash of Colours.   | Managers can choose their own away Kit colours, however to keep costs down we suggest you only purchase contrasting colour Shirts , please visit the Club Shop. Away Kit should only be worn for away fixtures. Younger teams may simply wish to wear Training Bibs where there is a clash of colours.  |
| I have found a cheaper price Kit and the Colours are similar.  | PENDLE SPORTS is the official kit supplier & Club Shop. We receive favourable terms as a Club for purchasing on a regular basis.All Kit is to be supplied by Pendle Sports.   |
| Why do we have to Fund raise   | The amount we receive in Fees & Subs is not enough to run the club & invest in the future. That is why we run special events like the Tournament, Bike Ride , Sky Dive, Quiz &Speaker Nights, Poker Nights etc. We appreciate your Support & the volunteers who help and these special occasions.   |
| Can we Fund Raise for Our Team   | Yes, as long as it is not intrusive to other teams. A simple Raffle amongst supporters at home games can raise money for your team for special outings & treats, equipment etc. You could also run a quiz or social night at the club.  |
| I have a potential Sponsor, what do I do next.   | Contact the Club Treasurer or Secretary with full details. Any Sponsor must be appropriate for the age group and needs to be submitted to Nott's FA for approval. <b>DO NOT ORDER KIT OR GET YOUR KIT PRINTED UNTIL ARTWORK HAS BEEN APPROVED &amp; KIT HAS BEEN PAID FOR . (See Sponsorship section)</b>   |
| I would like to take the 'Introduction to Coaching Course', but it is expensive. I can't afford it. Will the Club pay for it...? | Some courses are FREE and we will Fund some qualifications required by the FA. As a Charter Standard Club we get discounted rates for courses. In some cases the Club may contribute to the cost of a Coaching course, there may also be other funding available. However we will only pay on successful completion of the Course. We will not pay for more advance courses or Referees courses. However as a club we may have access to external funding |
| Where can I get on a suitable Coaching Course  | The Notts FA are now running courses 'ON LINE' Go to the FA Web Site <a href="https://thebootroom.thefa.com/">https://thebootroom.thefa.com/</a> Talk to one of our Football development team for advise.   |
| I know nothing about football but would still like to be involved  | There are lots of ways you can help your Team and the Club. From general Secretarial work, Collecting Subs , looking after the teams finances, to writing Match reports, Team Newsletters & Web site administration...No experience required , just enthusiasm. We also need people to volunteer a little time for small building & repair projects around the club.  |



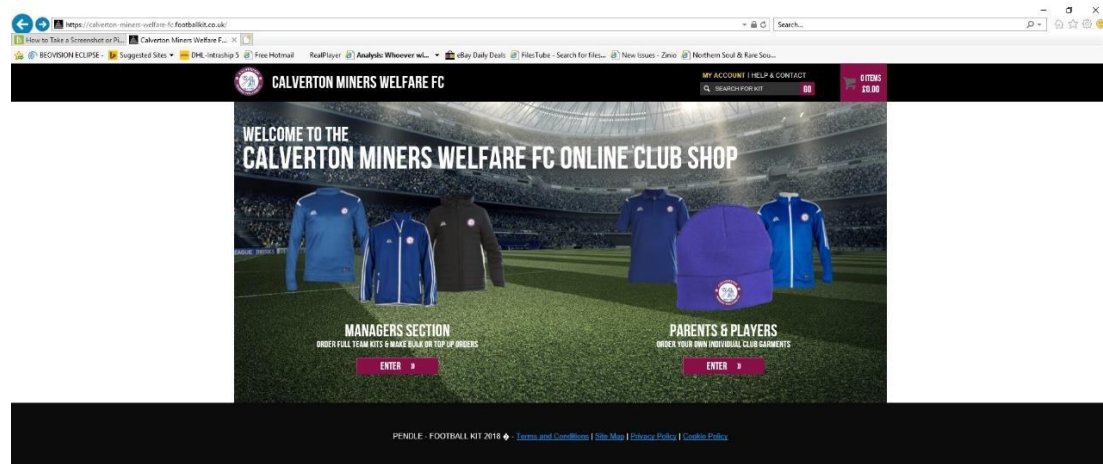
We are pleased to announce our Club shop has now gone live.

The nominated Kit supplier is **Pendle sports**, the Club shop web site link is :-

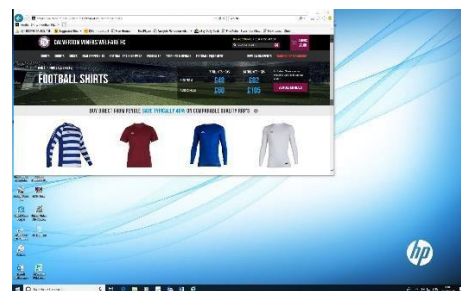
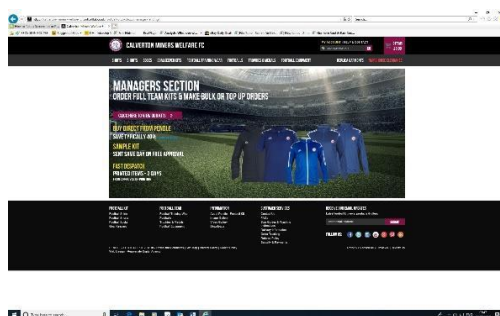
<https://www.footballkit.co.uk/football-club-shops/>

Calverton Shop Link:

<https://calverton-miners-welfare-fc.footballkit.co.uk/>



**On Line Ordering** : Managers & Parents can order personal club kit, Training kit, Rain tops, Hats, balls etc directly from the web site at discounted rates. Teams wanting to order full kit need to find a Team sponsor, and should contact the club Chairman/Secretary before ordering full kits to discuss options. Orders should be delivered within 7 days of ordering.



**Team Sponsorship : See Page 23**

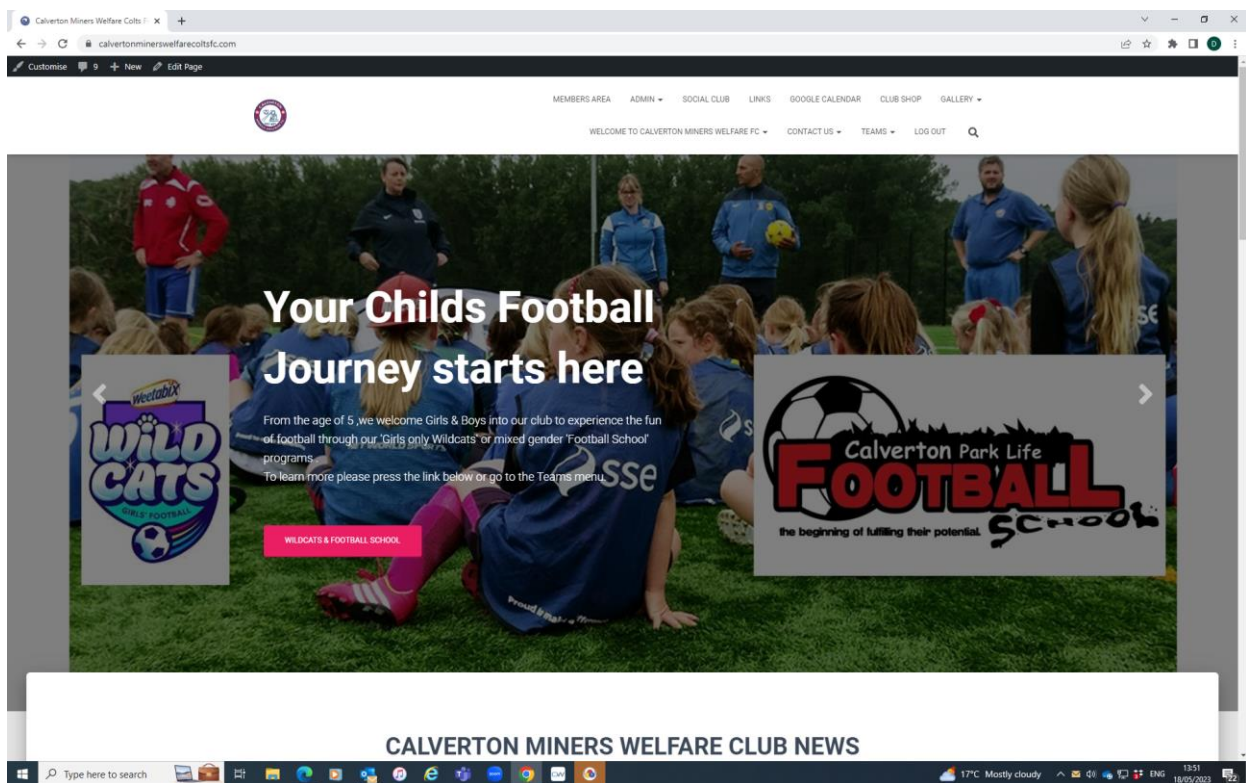
# WEB SITE

<https://www.calvertonminerswelfarecoltsfc.com>

Want to know more about our club, who to contact ..?

The 'Calverton Miners Welfare Colts FC' Web site is the place to start. Our web site is built & maintained by volunteers and designed to reflect our club values.

Just send us a message or become a member to receive regular news updates.





CHARTER STANDARD  
COMMUNITY CLUB

## RECENT CLUB HISTORY:

The **Calverton Miners Welfare Football Club** is one of the first 84 clubs in the country to achieve FA Charter Standard Community Club accreditation. Through initiatives have been taken in conjunction with the Welfare Trustees we promote good nutrition, well-being, healthy lifestyles with football and coaching being the 'transport mechanism'.

**The FA Community Club scheme builds upon the foundations of the Charter Standard scheme in placing clubs at the heart of their community.**

Community Clubs, the pinnacle of the club development pathway, will be those that have a high quality, multi-team (minimum of 10 teams) set up with excellent social, training and playing opportunities for all. As such, the number of Community Clubs is one of the truest measures of success for The FA Football Development strategy.

All FA Community Clubs are required to meet FA criteria, ensuring they provide opportunities for players irrespective of age, gender, religion and ability. Clubs must also provide qualified coaches, first aiders and child protection officers.

We have an excellent record so far having won the County Charter Standard Community Club Award in 2003, 2004 , 2011 & 2013

Calverton were the first football club in the 13 years of the Award to receive the prestigious Nottinghamshire Amateur Sports Club of the Year in 2004 from a total of 2200 county clubs.

In 2005 we won the National FA Charter Standard Community Club Award.

We have grown in size from 4 to over 25 teams and a structure is now in place whereby boys & girls as young as 5 and 6 are joining the nursery football school and feeding in the following seasons to our junior teams and eventually Senior football , Coaching & refereeing. Our children are the future of the club.

Did you know that 22% of the population have some level of disability! As a recognised provider of sporting opportunities we now have an obligation under the Disability Discrimination Act 2004 to encourage and provide for those with disabilities. In 2011 we actively started promoting disability training sessions through links with Nott's FA & the Disability family. In 2014 Calverton founded the 'Want2Play League' for children with disabilities which grew to 7 clubs . In 2021 we introduced a pathway to adults disability football and we are members of the East Midlands Pan Disability League running monthly football festivals. We now run 4 disability teams at different ages playing competitive football at U12,U16 & 2 Senior teams.

In 2025 we will launch 'Comets' sessions aimed at 5 to 11 year olds with disabilities.

Between 2014 global downturn & the recent pandemic the Welfare & football club has struggled financially. The Senior Football section has been badly hit where once there were 5 men's teams only 2 were fielded in the 2014-15 Season. In 2019 we launched our Wildcats sessions, to cater for young girls wanting to try out football in a casual setting. The long term strategy to re-establish the female football sections from the ground up alongside Sunday football school for Boys & girls. In 2024 we will have 3 female teams playing in the Notts Girls & Ladies league.

## PAST CLUB HISTORY: CALVERTON COLLIERY TEAM 1946



**Calverton Colliery Team 1952/53**

**Calverton Colt's** teams had existed prior to 1988 but appeared to have been both formed and disbanded in the early to mid-1970s. The Football club in its recent form started in 1988, the brainchild of 4 Parents. The Club is one of a number of subsidiary groups of the **Calverton Miners Welfare** charity. The Pitches & Buildings all belong to the Miners Welfare. The football club use the buildings & surrounding sports facilities for which it pays fees designed to cover the running & maintenance costs of the facilities. The relationship between the Welfare & Football club allows us to receive special rates for Pitch & Facilities hire.

The earliest evidence of a Calverton Colliery team dates back to 1946 which was formed by Arthur "Jocky" Matthews. It is believed that this team played a number of friendly games before entering the Nottingham Spartan League Division 2 (now defunct) for the 1947-48 seasons.

They played their first competitive match on 13 August 1947 at home against Whatton United with the result finishing all square at 1-1. The Nottingham Football Post from the time stated that "Reports are to hand of the splendid amenities of Calverton", something that we still pride ourselves on today.

Calverton Colliery finished their inaugural season in eighth place and despite being mentioned in the "Arrangements for 1948-49" they did not compete again until 1951-52. This time they played in the Nott's Realm League Division 2 (also defunct), where they finished bottom with just 4 points from 24 games having conceded 141 goals.

The following season (1952-53) was a different story with a team finishing as Division 2 Runners Up, to the marvellously named "Crittall and Luxfer FC" ( a company which was engaged mainly on Government contracts for munitions) , and as League Senior Cup Runners Up.

The following season 1954-55 they joined the Nottingham & District League (also defunct) and again finished the season as Division 1 Runners Up

Calverton competed in this league until 1956 when they joined the Nott's Alliance before taking the bold move in the 1964-65 season of joining the Central Alliance. This was a semi-professional league in which Calverton finished fourth from bottom winning 9 of 30 league games – by no stretch of the imagination being a disaster. However, the following season the club decided to move into the Nott's Combination where it stayed until 1988.



There were some successful times in the 1970's where the club made real progress in the Nottinghamshire Senior Cup and were involved in matches against both Arnold Town (away) and Eastwood Town (home) which both drew sizeable crowds.

In 1988 there was pressure amongst the players to shift back into the Nott's Alliance. A number of senior committee members of the club at that time, namely Eddie Varney, Jeff Kirk and Bob Kinton were also officials of the Nott's Combination and it was very difficult for them to continue effectively as officials of a club in a 'rival' league and all three resigned. It should be mentioned here that in 1980 Calverton Welfare entered a team into the Sunday Section of the Combination and remain to this day being only one of two founder members left.

Shortly afterwards, the club went through a difficult phase culminating in only seven players turning up for one match and eventually folded.

## TODAY

Between 2008 & 2018 Calverton has produced some formidable Junior teams, picking up several County Shield honours, League Cups & League championships, doubles & even treble winners. In 2023 the under 12s & U13s won the league titles, In 2022 & 2023 Inclusive Pan Disability squad won back to back East Midlands Pan Disability Championship league titles.

Come forward to 2024/25 and we will have over 25 teams playing every Saturday & Sunday from under 8s, boys & girls through to seniors & Veterans. Our Wildcats & Sunday Football school for 5-9 year olds feeds the club with new junior teams.

Our teams play in the NDFFF want2Play, East midlands pan disability League, YEL, NYL, NGL, NSL competitions.



## FUTURE

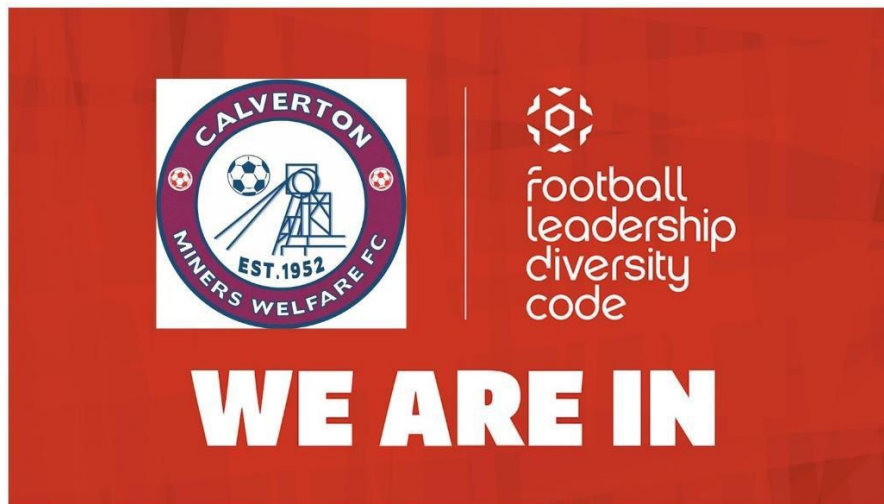
As parts of our future plans the committee have identified a need to grow the club through our 5 to 8s Junior football school and inclusive football, we have introduced a 'Girls Wildcats section' to encourage more girls to join the club as juniors and to re-establish a Ladies & Senior Mens teams. We have already established 2 new Girls teams, 4 x disability Teams playing the East Midlands Pan Disability League winning back to back Championship titles in 2021/22, 2022/23 & 2023/24.

The Senior section is looking to add another senior squad & U18/U21s developmentsquad in 2024/25 with midweek football to ensure we have a clear pathway for our juniors to look forward to.

Planning permission has been granted to develop a new full size 3G all-weather pitch with Improved floodlights & training area, car park and we are looking to 2025 for completion.

We have a bright future and long term strategy.





## FOOTBALL LEADERSHIP DIVERSITY CODE

### 1. CLUB LEADERSHIP

We commit that our club's leadership should reflect the diversity of our local community. We will achieve this by:

- Ensuring that our leadership reflects the local population in terms of gender, ethnicity, disability and all other historically underrepresented communities
- Ensuring equality of opportunity for all
- Carrying out selection based on merit, whilst seeking to source volunteers from a diverse pool of talent
- Monitoring all protected characteristics, cultural and social backgrounds within our leadership

### 2. COACHING & SELECTION

We commit to ensuring diversity within our volunteer coaching workforce. We will achieve this by:

- Supporting individuals from all historically underrepresented groups and across age groups to become the next generation of coaches
- Selecting coaches openly and encouraging people from a diverse range of backgrounds to coach within the club
- Monitoring the diversity of our coaches and working towards them reflecting our player base

### 3. CULTURE

We commit to continuing to strive for the most inclusive club culture. We will achieve this by:

- Having a 'Club Equality Policy' which promotes equality, diversity and inclusion, adopted by all club members / players / officials as a condition of membership annually
- Ensuring all club officials attend The FA's equality, diversity and inclusion online offerings, refreshing this at appropriate intervals
- Signposting all members to The FA's equality, diversity and inclusion online training each season
- Ensuring that young people are involved meaningfully in our club (through a youth committee or other suitable mechanism) if our club provides a youth offering or youth teams
- Monitoring our cultural progress through an annual club culture survey with a template provided by The FA

### 4. REPORTING BULLYING & DISCRIMINATION

We commit to encouraging the reporting of discrimination. We will achieve this by:

- Distributing information on how to report discrimination to all club members, every season. This will include information on the importance of immediately notifying a match official of any incident that occurs on a match day
- Acknowledging that in some instances, discriminatory abuse or behaviour may be a criminal offence. In these instances, we will be proactive and report this to the Police by calling 101
- Reporting all incidences of discrimination immediately to our local County FA, Kick It Out or The FA

5. **RAISING AWARENESS** We commit to raising awareness on the topic of equality, diversity and inclusion. We will achieve this by:
- Using The FA's Diversity Code resources to promote our support and raise awareness with others
  - Making efforts to engage with local media and other local bodies to publicise our commitment to equality, diversity and inclusion
  - Supporting The FA and other anti-discrimination body campaigns By signing this code, we commit to being Leaders in Football Diversity, ensuring that we promote and deliver the highest standards across our club, including:

**FOOTBALL LEADERSHIP DIVERSITY CODE** The Football Leadership Diversity Code will help clubs to better represent our modern and diverse society across the National League system, Women's pyramid and grassroots football by seeking to tackle inequality and improve representation of historically underrepresented groups across senior leadership positions, wider team operations and coaching roles.

NOTES: • Club Leadership means the club's committee or anyone who makes day to day decisions concerning the running of the club

- Each club can receive a breakdown of local diversity data from their local County FA for comparison purposes
- The FA will provide templates of recruitment resources for clubs to use
  - The FA will provide guidance on monitoring club diversity
- The FA will provide a template for a Club Equality Policy
- The FA will provide online club officials diversity training accessible and trackable via FAN number
- The FA will provide a template for an annual internal club culture survey
- The FA will provide reporting resources and videos to clubs via online mechanisms
- The FA will create digital Diversity Code promotional resources for clubs
- The FA will assist in providing mechanisms to help monitor all the above measures, which aligns to the current League and Club accreditation process

The above supporting mechanisms in place to support clubs with the Football Leadership Diversity Code may change over time to drive adoption of the code. Other protected characteristics mentioned above means all areas covered under the Equality Act 2010. These are:

- Gender
- Ethnicity
- Disability
- Age
- Faith
- Sexual orientation
- Marriage or civil partnership
- Maternity/Paternity
- Gender reassignment





## PLAYER PATHWAY

### PLAYER OPPORTUNITIES (5 to 8 Years)



Calverton Park Life Football School is aimed at boys and girls looking to start and learn to play football in a structured, safe environment. Aimed predominately at all children between 5 and 8 years of age, its role is to prepare them for entry into organised mini soccer. Whilst with the Football School they learn the basics of football with the emphasis on fun, enjoyment, discipline and skills.

Football School was started in November 2008 by Eddie Ward and Mark Corcoran and has since then has successfully launched seventeen teams into the Young Elizabethans League up to the 2019/20. The School has gone from strength to strength with numbers averaging 20-35 each Saturday morning. Following Eddies retirement in 2018, Bill Bennett took over the running of the school as head coach for the club.

The sessions are very much organised for the specific age and skill level, so 5/6 years will train together with the same for 6/7 year olds but warm up and cool down is done all together.

The **'Wildcats' session** for girls, started in 2019 through the FA directive to encourage more girls to take up the national game. SSE Wildcats football centres offer **girls aged 5-11 years** a chance to try football for the first time and provide regular opportunities to play and are focused on helping girls make friends, have fun and be active through football. **(Wildcats : Fridays 5.15 to 6.30pm)**

For general progression we will support the Football school with an offer of 100% funding for up to 3 new qualified coach qualifications each season to ensure coach ratios are high to ensure detailed skills teaching. These coaches will be encouraged to take on manager responsibilities as the children move to competitive football at 8 Years old.

Each of our teams launched into mini soccer has had an enthusiastic parent wanting to run a football team; we have assisted them in obtaining the right qualification, e.g. FA Level1 Introduction to Coaching as a minimum standard.

We now also support them in applying for financial assistance/grants which might be available but this does vary from season to season



according to current availability.

If you have children that are keen to learn about football why not bring them down to Calverton M.W. Football School to have a go., **5 to 8 years old** . Yes they'll be nervous and shy but it won't be long before they make new friends, grow in confidence, learn new skills and want to come again. Or, why not come down and have a chat with other parents and a look at how we do things?

For further details please contact

**Bill Bennett 07473 807681**

or just turn up with football boots, shin pads, and a drink on

**Football School : Sunday morning 10am to 11.15am.**



**YOUTH PLAYER OPPORTUNITIES (8 to 18 Years) Girls & Boys**



**CALVERTON MINERS WELFARE COLTS FC**

We run Teams at most ages from under 8 through to Under 18s under the junior colt's umbrella. Each team is encouraged to have a qualified coach at a minimum of '1st4sport level1', recognised by the FA. Additional coaching opportunities are provided by our 'UEFA Level two coaches. Up to the age of 16 years mixed gender team are allowed, however with the growing interest in ladies football Calverton want to establish a number of dedicated girls & ladies teams through the FA 'Wildcats' program



**Home of Champions**

## DISABILITY FOOTBALL (8 to 18 Years)



In 2011 Calverton launched its inclusive disability coaching program encouraging young children of all ages & abilities to come and enjoy football. A growing number of Children with Asperger's, Cerebral Palsy, Autism, learning & behavioural difficulties enjoy the weekly sessions whilst parents can sit back & relax & meet Parents with similar backgrounds in the club facilities. We have weekly training sessions and monthly football festivals. In 2025 Calverton will provide a new session called **COMETS** for children with disabilities (**5-11yrs**) to have fun through football that might not want competitive element of the game , but can progress later. 2024/25 was a good year with U12 & U16 teams , 2 x Adult Teams competing in the EastMidlands Pan Disability League, winning the 1<sup>st</sup> division & runner up in Championship.

**Contact David Lee for details:**

07904 458723, or email: [leehomelee@btinternet.com](mailto:leehomelee@btinternet.com)





**SENIOR PLAYER OPPORTUNITIES (16Years +)**



**CALVERTON MINERS WELFARE FC ( Senior Mens & Ladies)**

Juniors move into senior football at 19 years. However Juniors can register to play when they turn 16 years old and according to ability we encourage occasional games within the Men’s Reserves & First teams playing at Step 6 in the Notts Senior Leagues. Coaching is provide to eufa ‘B’ level with Bill Bennett. We are now looking to provide a safe development pathway at u18s & U21/23 age groups



**CALVERTON MW LADIES**

In 2025 we were delighted to re-established the senior ladies team , competing in division one of the Notts Ladies & Girls league. Its been a positive season with a top 3 position and Plate Final . Also we are pleased to be entering an U17s development team in 2026 that will form a springboard for the seniors and a pathway for our junior girls teams.





## CALVERTON MINERS WELFARE VETS FC

They think its all over ..!!!! When it's time to hang up the boots or take it easier we have a Veterans team playing in a veterans league of similar minded adults who want to continue competitive football at a slower pace. It's just as competitive but there are fewer games per season. **Ages 35 Plus.**



## ELITE FOOTBALLERS



If a professional club shows interest in your child do not get carried away.

The chances of any youngster making it to the top of the football pyramid is heavily stacked against them, and it even less likely a talented player will go through our club from 8 to 16 without being picked up by a professional club along the way.

The glamour of the Premiership is still a long way from reality even if a talented player breaks into professional football and the career on average is only a few seasons even in the lower leagues. Calverton have had a number of players that have gone onto play at a higher level and we are proud to have provided a platform and been associated with them at some part along their football journey before Semi-Pro & Professional Football.

Laura Jayne O'Neil (Notts County WPL, Notts Forest Ladies)

Tom Cairney (Leeds Utd, Blackburn Rovers , Hull City, Fulham, Scotland)

Steve Cherry (Notts County, Derby County, Mansfield Town, Lincoln city)

Mick Waitt (Notts County, Lincoln City, New Zealand Head Coach)

Romello Nangle (Notts County)

Kyle Dixon (Notts County, Boston Utd)

Billy Bennet (Ilkeston Town)

Joe Brothwell (Ilkeston Town)

Liam Bateman (Derby County, Aston Villa)

Malachi Lavelle Moore (Notts County, Macclesfield Town)

Ciarn Kean (Notts County, Boston Utd, Rep Ireland)

Greg Tempest (Notts County, Boston Utd, Lincoln City, Rep Ireland)

Alex Troke (Notts County, Walsall)

Lewis Troke (Burton Albion)



## PARENT OPPORTUNITIES

You don't have to know anything about football to be involved. Every team needs a secretary & treasurer to function and we encourage parents to appoint responsible adults to cover the important positions to run a successful team. (Remember one person can't do it all, and the more the responsibility is shared, the running of the team is easier).

Importantly it is about the children enjoying a competitive team sport and the social aspects of being part of a club. Learning about fitness, healthy eating and respect of others.

A good manager & coach are crucial, and as a club we will assist you in obtaining the right qualification, e.g. 1<sup>st</sup>4sport level1 as a minimum standard.

You don't have to have played Football previously, but a good knowledge of the game is a help.

| Position                      | Responsibilities  | Recommended Qualifications  |
|-------------------------------|---|---|
| Coach                         | Provide Structured Training sessions  | Level One Introduction to coaching  |
| Manager                       | Team encouragement , advice & team selection  | Level One Introduction to coaching  |
| Secretary                     | Arranges Fixtures with opposition , Referees, and submits results to the league   | Good communication & administration skills, computer literate   |
| Treasurer                     | Collects subs, records expenditure & submit monthly account to club.  | Good communication & administration skills, computer literate   |
| Match Reporter                | Writes & submits Match reports to CMWFC web site. Every child like to read a report on the web site.                        | Good sense of humour ,English Language , skills & Computer literate   |
| Web Site – Team Administrator | Updates web site with Fixtures & Results, Team / Player Information and Match Reports                                       | Good communication & administration skills, computer literate.. and Enthusiasm  |
| Referee                       | Parents & Children from the age of 14 can gain a Referee qualification and at the same time earn money from youth Football. | FA Basic Referees Course  |
| Fundraiser                    | All Parents can help raise funds for their team & the Club , with Raffles, helping & tournaments events etc.                | Enthusiasm  |
| Committee member              | influence the future direction your Club . Represent your children's team/age group at monthly meetings                     | Enthusiasm, common sense,ability to see the bigger picture, sense of humour. Desire & Ability to get things done. Commitment to attend meetings |



For those who want to gain a higher coaching & referee qualifications we can guide individuals to suitable courses run through the FA and even try to source Grant funding



*Inspiring a generation*



*be a MANAGER*

*be a COACH*







try REFEREEING



ADMIN / IT SKILLS



Have a go at FUND RAISING

**We Need You...!!!!**



**HELP OUR CHILDREN ENJOY THE GAME**

# COACHING PATHWAYS

The FA requires Clubs to have at least one qualified coach responsible for running each team at Grass roots level; Modules will cover Child Welfare, Safeguarding & emergency 1<sup>st</sup> aid as well as coaching techniques

The FA Education provides a comprehensive approach to developing coaches from grassroots to elite level.

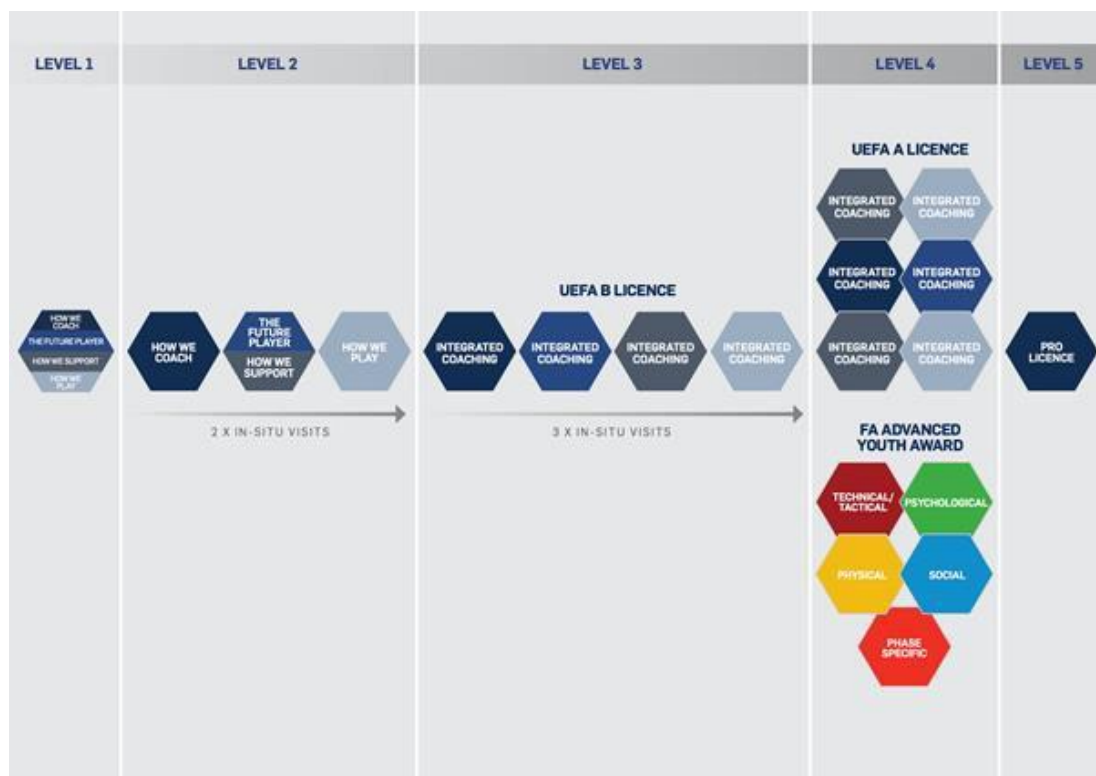


The coach education pathway maps the learner journey from a new coach undertaking their first course right through to the advanced qualifications required to manage at an elite level.

There are various strands in The FA's coach education pathway. The "core" strand comprises of **The FA Level 1 introduction**

**to Coaching Football** through to The FA Level 5 (UEFA Pro) in Coaching Football. Other strands feature specialist courses, including goalkeeping, Futsal and disability football.

The first step for new coaches is to take **The FA Level 1 introduction to Coaching Football**. With courses On-line through the **FA Bootroom**, the course provides you with an introduction to coaching the game and working with players from under seven to open age. The course is coordinated by your local County FA and you should contact them to find out more about courses



## REFFEREE PATHWAY

The FA Referee Course is designed to equip new referees with the key skills and knowledge they will need to be able to referee grassroots football matches safely and effectively. It is for people aged 14 and over who want to referee mini soccer, 9 v 9 and/or 11 v 11 football.



The course comprises online learning on the Laws of the Game and face to face training. You must complete the online learning before attending the face to face training. You will also need to complete online

safeguarding training before attending the face to face training.

The online learning has five sections (modules) and will take approximately 90 minutes to complete. There are lots of videos to demonstrate how the Laws should be applied, activities to help reinforce the important points and, at the end of each module, there are some questions to test what you've learned.

The online learning can be accessed

at <https://falearning.thefa.com/course/view.php?id=1804>







## **OTHER OPORTUNITIES (SKILLS DATA BASE)**

### **Volunteers, Administration, Information Technology, marketing, Builders, Electricians, Plumbers.**

There is a lot more to running a football club than just turning up at the weekends. As a club we are seeking volunteers to help in all areas from administration to promotion, general repairs & fund raising.

We are proud of our club and community aspect of its existence. We would like to think you will also want to support its future development. In 2019 , as a result of few volunteers hard work , the Play Area which was in a sorry state has been replaced. What a difference it makes.



During the Covid-19 lockdown community volunteers have refurbished the Welfare to a superb standard, and we want to establish a skills database where we can call on people to help with projects or general repairs around the club & buildings.

If you have a skill and are happy to give up a few hours every now & again please sign up.

Fund raising, Publicity & Promotion, Team Sponsorship, IT skills, Web Site Team Administrator, Electricians, Plumbers, Builders, Roofers, Joiners Printing, Gardeners, Mechanics

**PLEASE CONTACT YOUR MANAGER/CLUB CHAIRMAN/CLUB SECRETARY**





## SPONSORSHIP

Teams are encouraged to find sponsors for Kit, Training tops, & Equipment. However please contact the club secretary and do not arrange your own printing of Kit.

Sponsors must be age appropriate & require the approval of Nott's FA before we can proceed. The printed Logo has to be a specific size to meet FA guidelines.

We are open to any ideas so do not hesitate to contact us to discuss.

### TEAM SHIRT SPONSORSHIP:

(Company Logo Printed on selected Team Shirts)

Sponsorship covers the cost of Kit & Printed Logo)

Junior Colts Teams (up to age of 11years).....£ on application

Senior Colts Teams (11 to 17 Years) ..... £ on application

Men's /Ladies Teams .....from £ on application



### OTHER OPPORTUNITIES: SENIORS

BANNER/PITCH SIDE: 3 metre Wide X 1 metre High £ On Application

£ On Application



If you feel your company would like to be involved or would like to discuss sponsorship ideas please contact the Club Secretary



## CLUBS SEASON TIMETABLE

| Month                  |  | Notes   |
|------------------------|--|---|
| April 31 <sup>st</sup> | Official end of Season   | Matches may extend into May   |
| May                    | Close Season<br><br>Re-Sign existing Players   | Re-Sign your existing Junior squad players with Retention forms supplied by the league, Send completed forms to the League Secretary before June 1 <sup>st</sup>  |
| June                   | Close Season<br><br>Register Teams, Managers & Coaches with Leagues & FA.<br><br>New Players Registrations (Juniors)<br><br>Summer Football Tournaments<br><br>Coaching courses (Check Notts FA web site for details)  | The Club Secretary registers individual Teams, Managers & Officials with the FA Please provide proof of Coaching badge, 1 <sup>st</sup> Aid, Child protection & CRB.<br><br>From 1 <sup>st</sup> June You may sign New Players and can approach players at other clubs as long as they have not signed retention forms with their previous club<br><br>There are numerous summer tournaments to keep the teams interested during the summer break.<br><br>Enrol in a Coaching course or re-new your existing Coaching badge |
| July                   | Coaching courses (Check Notts FA web site for details)<br><br>Summer Football Tournaments<br><br>Seniors Pre-Season Training & Friendlies<br><br>Sign On Players (Seniors)   | Enrol in a Coaching course or re-new your existing Coaching badge<br><br>Enter you team in a local Football Tournament<br><br>3 <sup>rd</sup> week of July<br><br>Register Players with the Club & League with therelevant signing on fee.  |
| Aug                    | Coaching courses (Check Notts FA web site for details)<br><br>Summer Football Tournaments<br><br>Player Registrations (Juniors)<br><br>Junior Pre-Season<br><br>Submit Signing on forms & £35 fees to the Club Secretary/ Treasurer<br><br>Seniors Season starts | Enrol in a Coaching course or renew your existing Coaching badge<br><br>Enter you team in a local Football Tournament<br><br>5 <sup>th</sup> August Deadline for opening of new Season.<br><br>Training & Friendly Matches<br><br>All players must have paid signing on fees before the start of the season   |
| Sept- March            | Juniors Season Starts<br>Player Transfer Forms   | GOOD LUCK<br>Available from 5 <sup>th</sup> September   |



# Respect

## FOOTBALL RESPECT CAMPAIGN:

FA is responding to a plea from grassroots football to tackle unacceptable behaviour in football. Respect aims to tackle the mass drop-out of referees from football due to abuse. Thousands of referees dropped out of the game last season which has led to the number of match officials hitting its lowest ever level. Respect also aims to bring the fun back to football for young players. Parents and coaches pushing too hard and pressurising impressionable children for three points is having a negative impact on their development and enjoyment of the game.

- **98% of referees have been verbally abused and 27% have been physically abused.**
- **Retention Referees is at an all-time low. We have a National Shortage**
- **One in three grassroots matches is now played without a qualified match official.**
- **Over 800 grassroots matches were abandoned last season due to unacceptable behaviour from players and/or spectators.**
- **Parents and coaches want role models in the elite game to provide a positive example for young players.**
- **The No.2 priority from grassroots football is tackling the 'pushy parent' placing too much pressure on their child and their child's team from the side lines.**





## JUNIOR PLAYER CHARTER:

We all have a responsibility to promote high standards of behaviour in the game.  
As a player, you have a big part to play.  
That's why The FA is asking every player to follow a **Respect Code of Conduct**.

### **When playing football, I will:**

- Always play to the best of my ability
- Play fairly – I won't cheat, complain or waste time
- Respect my team-mates, the other team, the referee or my coach/manager
- Play by the rules, as directed by the referee
- Shake hands with the other team and referee at the end of the game
- Listen and respond to what my coach/ team manager tells me
- Talk to someone I trust or the club welfare officer if I'm unhappy about anything at my club.

**I understand that if I do not follow the Code, any/all of the following actions may be taken by my club, County FA or The FA.**

### **I may:**

- Be required to apologise to my team-mates, the other team, and referee or team manager
- Receive a formal warning from the coach or the club committee
- Be dropped or substituted
- Be suspended from training
- Be required to leave the club.

### **In addition:**

- My club, County FA or The FA may make my parent or carer aware of any infringements of the Code of Conduct
- The FA/County FA could impose a fine and suspension against my club.





## ADULT PLAYER CHARTER

We all have a responsibility to promote high standards of behaviour in the game. Players tell us they want a referee for every match, yet 7,000 match officials drop out Each season because of the abuse and intimidation they receive on and off the pitch. Respect your referee today and you may just get one for every match this season. Play your part and observe The FA's **Respect Code of Conduct** for players At all times.

### **On and off the field, I will:**

- Adhere to the Laws of The Game
- Display and promote high standards of behaviour
- Promote Fair Play
- Always respect the match officials' decisions
- Never engage in public criticism of the match officials
- Never engage in offensive, insulting or abusive language or behaviour
- Never engage in bullying, intimidation or harassment
- Speak to my team-mates, the opposition and my coach/manager with respect
- Remember we all make mistakes
- Win or lose with dignity. Shake hands with the opposing team and the referee at the end of every game.

**I understand that if I do not follow the Code, any/all of the following actions may be taken by my club, County FA or The FA.**

### **I may:**

- Be required to apologise to team-mates, the other team, referee or team manager
- Receive a warning from the coach
- Receive a written warning from the club committee
- Be required to attend an FA education course
- Be dropped or substituted
- Be suspended from training
- Not be selected for the team
- Be required to serve a suspension
- Be fined
- Be required to leave the club.

### **In addition:**

- The FA/County FA could impose a fine and/or suspension on the club.



## MANAGER/COACHES CHARTER:

We all have a responsibility to promote high standards of behaviour in the game. In the FA's survey of 37,000 grassroots participants, behaviour was the biggest concern in the game. This included the abuse of match officials and the unacceptable behaviour of over competitive parents, spectators and coaches on the sideline. Play your part and observe the FA's **Respect Code of Conduct** in everything you do.

### **On and off the field, I will:**

- Show respect to others involved in the game including match officials, opposition players, coaches, managers, officials and spectators
- Adhere to the laws and spirit of the game
- Promote Fair Play and high standards of behaviour
- Always respect the match official's decision
- Never enter the field of play without the referee's permission
- Never engage in public criticism of the match officials
- Never engage in, or tolerate, offensive, insulting or abusive language or behaviour.

### **On and off the field, I will:**

- Place the well-being, safety and enjoyment of each player above everything, including winning
- Explain exactly what I expect of players and what they can expect from me
- Ensure all parents/carers of all players under the age of 18 understand these expectations
- Never engage in or tolerate any form of bullying
- Develop mutual trust and respect with every player to build their self-esteem
- Encourage each player to accept responsibility for their own behaviour and performance
- Ensure all activities I organise are appropriate for the players' ability level, age and maturity
- Co-operate fully with others in football (e.g. officials, doctors, physiotherapists, welfare officers) for each player's best interests.

**I understand that if I do not follow the Code, any/all of the following actions may be taken by my club, County FA or The FA.**

### **I may be:**

- Required to meet with the club, league or County Welfare Officer
- Required to meet with the club committee
- Monitored by another club coach
- Required to attend a FA education course
- Suspended by the club from attending matches
- Suspended or fined by the County FA
- Required to leave or be sacked by the club.

### **In addition:**

- My FACA (FA Coaches Association) membership may be withdrawn.



## PARENT CHARTER:

We all have a responsibility to promote high standards of behaviour in the game.

This club is supporting The FA's Respect programme to ensure football can be enjoyed in a safe, positive environment.

Remember children's football is a time for them to develop their technical, physical, tactical and social skills. Winning isn't everything.

Play your part and observe The FA's **Respect Code of Conduct** for parents at all times.

### **I will:**

- Remember that children play for FUN
- Applaud effort and good play as well as success
- Always respect the match officials' decisions
- Remain outside the field of play and within the Designated Spectators' Area (where provided)
- Let the coach do their job and not confuse the players by telling them what to do
- Encourage the players to respect the opposition, referee and match officials
- Avoid criticising a player for making a mistake – mistakes are part of learning
- Never engage in, or tolerate, offensive, insulting, or abusive language or behaviour.

**I understand that if I do not follow the Code, any/all of the following actions may be taken by my club, County FA or The FA.**

### **I may:**

- Be issued with a verbal warning from a club or league official
- Be required to meet with the club, league or CFA Welfare Officer
- Be required to meet with the club committee
- Be obliged to undertake an FA education course
- Be obliged to leave the match venue by the club
- Be requested by the club not to attend future games
- Be suspended or have my club membership removed
- Be required to leave the club along with any dependents.

### **In addition:**

- The FA/County FA could impose a fine and/or suspension on the club.

# NOTTS FA & LEAGUE INFORMATION:

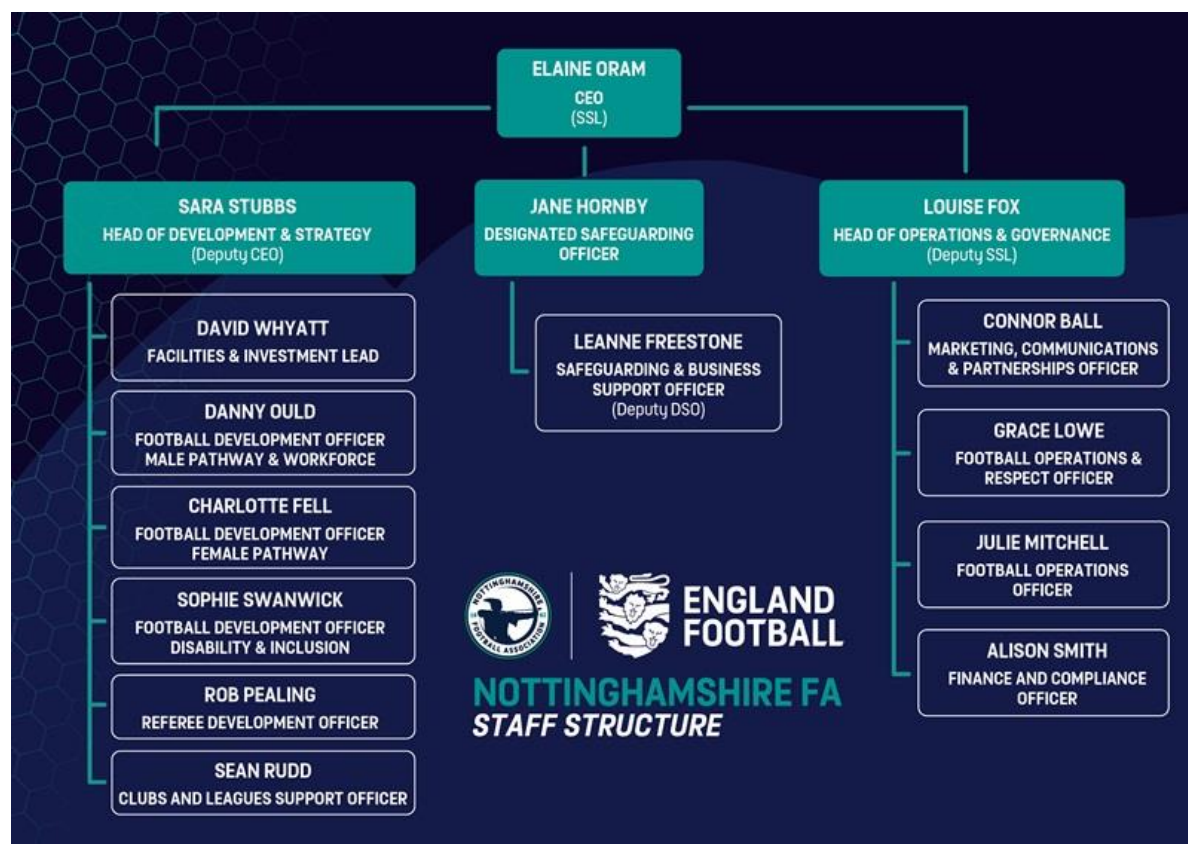
**Nottinghamshire FA**  
**Regan Way**  
**Unit 6b**  
**Chetwynd Business Park**  
**Chilwell**  
**NG9 6RZ**

## Get In Touch

**By Phone:** 01159837400  
(9am - 5pm Monday - Friday)

**By Email:** [info@nottinghamshirefa.com](mailto:info@nottinghamshirefa.com)

## KEY PERSONS:





## Senior Management Team



**ELAINE ORAM**

Chief Executive

Tel: 0115 983 7400

Email: [Elaine.Oram@NottinghamshireFA.com](mailto:Elaine.Oram@NottinghamshireFA.com)



**SARA STUBBS**

Head of Development & Strategy (Deputy CEO)

Tel: 0115 983 7400

Email: [Sara.Stubbs@NottinghamshireFA.com](mailto:Sara.Stubbs@NottinghamshireFA.com)



**LOUISE FOX**

Head of Operations & Governance

Tel: 0115 983 7400

Email: [Louise.Fox@NottinghamshireFA.com](mailto:Louise.Fox@NottinghamshireFA.com)

## SAFEGUARDING TEAM



**Jane Hornby**  
**Designated Safeguarding Officer**  
**Tel: 0115 983 7400 (Option 1)**  
**Email: [Safeguarding@NottinghamshireFA.com](mailto:Safeguarding@NottinghamshireFA.com)**



**Leanne Freestone**  
**Safeguarding & Business Support Officer (Deputy DSO)**  
•Working alongside the DSO to manage the safeguarding of children and adults at risk.  
•Responding to low level safeguarding/poor practice concerns.  
•Co-ordinating safeguarding visits throughout the season to ensure that clubs create safe cultures and environments for everyone involved in football.  
•Providing cover in the absence of the DSO.  
•Assisting the SMT with business administration tasks.  
**Tel: 0115 983 7400 (Option 1)**  
**Email: [Safeguarding@NottinghamshireFA.com](mailto:Safeguarding@NottinghamshireFA.com)**

## DEVELOPMENT TEAM



**DAVID WHYATT**

Facilities & Investment Lead

- To be the lead and accountable officer for the Facilities KPI.
- To ensure that every affiliated football fixture is played on a 'good' quality pitch.
- To identify and activate priority projects for Football Foundation investment via Local Football Facility Plans.
- To protect existing football facilities from planning application.

Tel: 0115 983 7400

Email: [David.Whyatt@NottinghamshireFA.com](mailto:David.Whyatt@NottinghamshireFA.com)



**ROB PEALING**

Referee Development Officer

- To recruit, convert, retain, develop and progress referees to service the game.
- Lead the delivery of referee development initiatives for grassroots referees, promotion candidates and referees with the potential and opportunity to progress through the refereeing pyramid.
- Lead on the planning and delivery of Nottinghamshire FA referee courses.
- Strategically co-ordinate the Nottinghamshire FA Referees Committee.

Tel: 0115 983 7400

Email: [Rob.Pealing@NottinghamshireFA.com](mailto:Rob.Pealing@NottinghamshireFA.com)



**DANNY OULD**

**Football Development Officer (Male Pathway & Workforce)**

- To develop and deliver a sustainable plan for growth and quality across the male football pathway.
  - Support with the complete pathway across the male game in Nottinghamshire.
  - Deliver Nottinghamshire FA's Coaches Club.
  - To be the lead and accountable officer for Male (Youth+Adult) Affiliated and regular recorded players KPI.
- Tel: 0115 983 7400

Email: [Danny.Ould@NottinghamshireFA.com](mailto:Danny.Ould@NottinghamshireFA.com)



**charlotte fell**

**Football Development Officer (Female Pathway)**

- To drive implementation of The FA's growth strategy for women's and girls' football locally.
  - Support with the complete pathway across the female game in Nottinghamshire.
  - Deliver the Nottinghamshire FA Youth Council
  - To be the lead and accountable officer for Female (Youth+Adult) Affiliated and regular recorded players KPI.
- Tel: 0115 983 7400

Email: [Charlotte.Fell@NottinghamshireFA.com](mailto:Charlotte.Fell@NottinghamshireFA.com)



**SOPHIE SWANWICK**

**Football Development Officer (Disability, Inclusion & Equality)**

- To strategically coordinate disability football provision across the Nottinghamshire FA and the local area.
  - To strategically co-ordinate the Nottinghamshire FA Inclusion Advisory Group
  - To influence and support the growth and retention of disability football.
  - To be the lead and accountable officer for Disability Affiliated and regular recorded players KPI.
- Tel: 0115 983 7400

Email: [Sophie.Swanwick@NottinghamshireFA.com](mailto:Sophie.Swanwick@NottinghamshireFA.com)





**SEAN RUDD**

**Clubs & Leagues Support Officer**

- To support, service and encourage inclusive leagues and clubs with complete player pathways through local collaboration and sharing of resources and knowledge.
- To be the lead and accountable officer for the Thriving Community Clubs and FA Accreditation KPI.
- To embed Football Development programmes in collaboration with relevant Football Development Officers.
- Strategically lead on the Nottinghamshire FA accreditation programme.

Tel: 0115 983 7400

Email: [Sean.Rudd@NottinghamshireFA.com](mailto:Sean.Rudd@NottinghamshireFA.com)

**OPERATIONS TEAM**



**JULIE MITCHELL**

**Football Operations Officer**

- To be the lead for the administration and delivery of the County Cup Competitions.
- Support Clubs and Leagues with the Player Registration process.
- Support with the Affiliation and Compliance of Clubs & Leagues.
- Support the discipline process with the processing of cautions (Red & Yellow Cards).

Tel: 0115 983 7400

Email: [Julie.Mitchell@NottinghamshireFA.com](mailto:Julie.Mitchell@NottinghamshireFA.com)



**GRACE LOWE**

**Football Operations Officer (Discipline & Respect)**

- To provide admin support to the discipline process in conjunction with Sport Integrity Matters (SIM).
- To be the lead for the Nottinghamshire FA Respect Programme and associated workshops and Respect Visits.
- Arranging Personal and Non-Personal Hearings and acting as Secretary to Commissions as required.
- Support with appeals and complaints – as part of the discipline process.

Tel: 0115 983 7400

Email: [Grace.Lowe@NottinghamshireFA.com](mailto:Grace.Lowe@NottinghamshireFA.com)



**alison smith**

**Football Operations Officer (Finance & Compliance)**

- To lead on compliance of Clubs & Leagues and associated workforce/volunteers - with ongoing monitoring.
- To lead on Affiliation and supporting Clubs through the process.
- To carry out the daily finance function for Nottinghamshire FA.
- To monitor debt management and ensure control is in place

Tel: 0115 983 7400

Email: [Alison.Smith@NottinghamshireFA.com](mailto:Alison.Smith@NottinghamshireFA.com)



**connor ball**

**Marketing, Communications & Partnerships Officer**

- To be the lead for Marketing & Communications support for Nottinghamshire FA.
- To enhance the image, profile and reputation of Nottinghamshire FA.
- To identify new, and maximise existing corporate sponsorship and partnership opportunities.
- To manage the relationship between Nottinghamshire FA and local media.

Tel: 0115 983 7400

Email: [Connor.Ball@NottinghamshireFA.com](mailto:Connor.Ball@NottinghamshireFA.com)

**Further advice on Safeguarding Children matters can be obtained from**

- a) CMWFC David Lee : TEL: 07904 458723 or Joanne Swinscoe: TEL: 07816 831048
- b) County Football Association's Welfare Officer  
[safeguarding@nottinghamshirefa.com](mailto:safeguarding@nottinghamshirefa.com)  
Or  
[info@nottinghamshirefa.com](mailto:info@nottinghamshirefa.com)
- c) [www.TheFA.com/football-rules-governance/](http://www.TheFA.com/football-rules-governance/) safeguarding Emailing  
[Safeguarding@TheFA.com](mailto:Safeguarding@TheFA.com)
- d) The FA Safeguarding Children general enquiry line 0845 210 8080

## **ADDITIONAL SUPPORT**

- Safeguarding children and young people Tel: 0808 800 5000  
Website [www.nspcc.org.uk](http://www.nspcc.org.uk) , email: [help@NSPCC.org.uk](mailto:help@NSPCC.org.uk)
- Childline - call 0800 1111 or visit [www.childline.org.uk](http://www.childline.org.uk)
- Safeguarding Adults [www.theanncrafttrust.org](http://www.theanncrafttrust.org)

**Read more at <http://www.nottinghamshirefa.com>**

## CHILDRENS & YOUTH FOOTBALL

### **Young Elizabethan Football League - Youth Football (Saturday + Sunday)**

Mr The Secretary

P.O. Box 8949, Cotgrave, Nottingham, Nottinghamshire, NG12 3WP

07834 468733

[yel@live.co.uk](mailto:yel@live.co.uk)

### **Notts.Youth Football League - Youth Football (Saturday + Sunday)**

Secretary – David Worley

TEL: 0115 916 4907

Email: [david@nyfl.co.uk](mailto:david@nyfl.co.uk)

### **Nottinghamshire Girls and Ladies Football League - Girls / Women's Football**

League Contact : Secretary

Email: [nglflchair@gmail.com](mailto:nglflchair@gmail.com) or [Secretary@nglfl.co.uk](mailto:Secretary@nglfl.co.uk)

Web Site ; <https://www.nglfl.co.uk/>

### **East Midlands Pan Disability League (Inclusive Football- Monthly)**

League Contact : Darren Bailey

Email: [darrenb1103@gmail.com](mailto:darrenb1103@gmail.com)

Web Site: <https://empdleague.co.uk/>

## SENIORS FOOTBALL

### **East Midlands Veterans Football League - Sunday Football (35 years of age plus)**

Contact : Mr Brian Hambidge

Email: [Brianhambidge44@gmail.com](mailto:Brianhambidge44@gmail.com)

### **Nottinghamshire Senior Football League - Saturday**

FootballContact: Mrs Tracie Witton

07973 702588

[traciewitton@basfordunitedfc.co.uk](mailto:traciewitton@basfordunitedfc.co.uk)



